



Te Ritorito Forum 2017

Richard Steedman – Iwi Chair

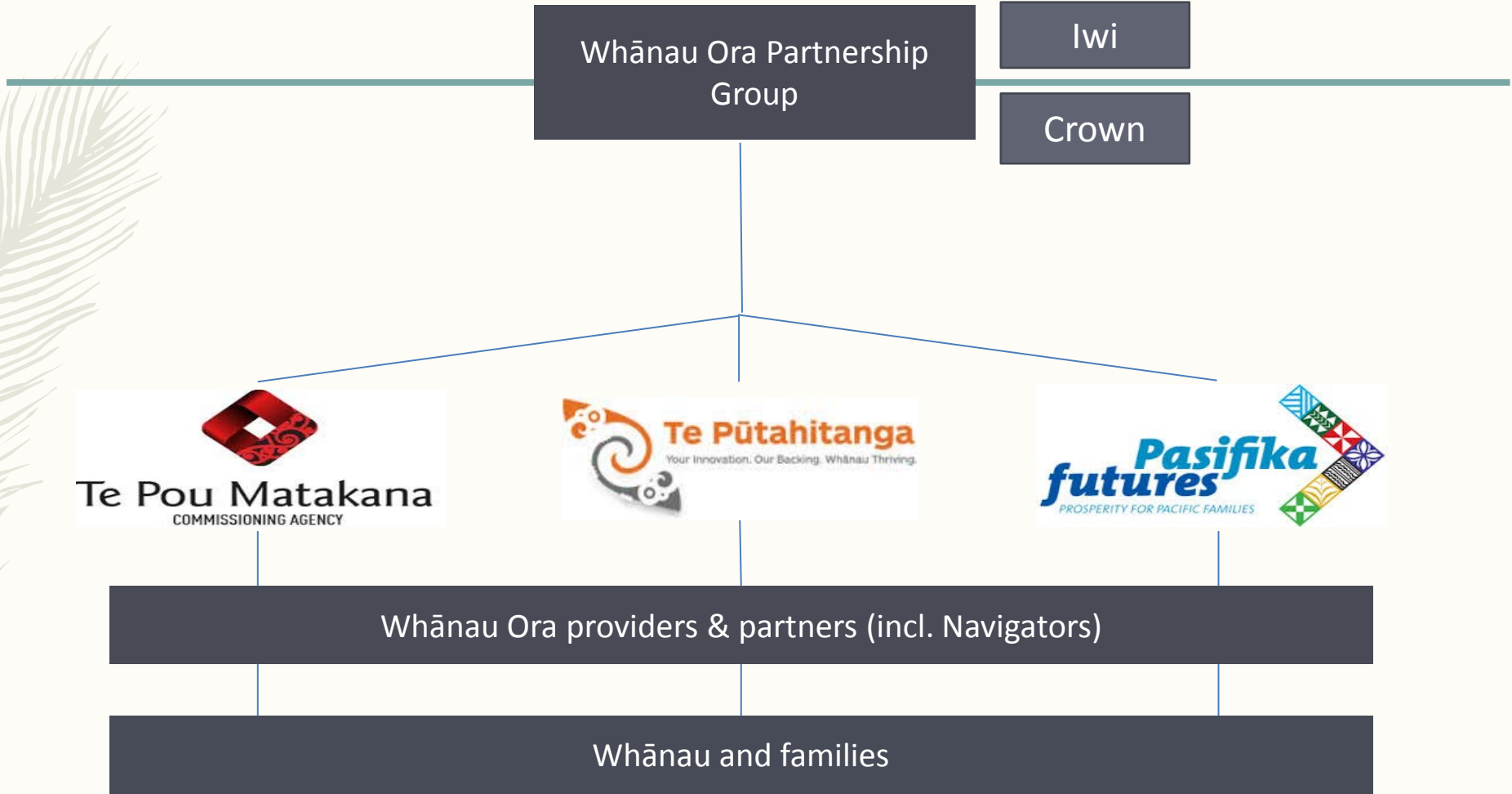
Amohia Boulton – Advisor



Whānau Ora Crown/Iwi Partnership

- Whānau Ora Partnership Group (WOPG)
- Operationalising the partnership

Whānau Ora Landscape





Whānau Ora Partnership Group

ToR Set the direction for WO by establishing agreed WO outcomes and agree on key WO priorities

Oversee the progress and success of WO by monitoring progress toward achievement of WO outcomes, identifying emerging opportunities and trends that may impact or contribute to the success of WO

Whānau Ora Partnership Group

Iwi representatives

- **Waikato Tainui - Rāhui Papa**
- **Ngāti Whātua - Naida Glavish**
- **Ngā Puhi - Raniera Tau**
- **Ngāti Rārua - Olivia Hall**
- **Ngāti Whitikaupeka - Richard Steedman**
- **Ngāti Porou - Selwyn Parata**

Crown representatives

- **Hon Te Ururoa Flavell** *Minister for Whānau Ora*
- **Hon Steven Joyce** *Minister of Finance*
- **Hon Jonathan Coleman** *Minister of Health*
- **Hon Hekia Parata** *Minister of Education*
- **Hon Anne Tolley** *Minister for Social Development*
- **Hon Simon Bridges** *Minister for Economic Development*



Whānau Ora Partnership Group

Work Streams

Whānau Ora Outcomes Framework
Developing a Co-investment Framework
Consultation/ Information Gathering

Challenges

Government agencies working cross-sectorally

Government agencies aligning their outcomes to the Framework

Whānau focus *not* individuals



Technical and Secretariat Support

- TPK provide secretariat support to the WOPG
- Team of iwi-based technical advisors provide advice and support to the Iwi Leaders comprising WOPG
- Technical advisors have expertise in policy development, community development, iwi and hapū development, Māori health and social service provision, research


Whānau Ora - Timeline

2009 – June	Taskforce on Whanau-centred Initiatives established
2009 – Oct/Nov	The Taskforce holds 22 regional hui and receives more than 100 written submissions Six goals for whanau empowerment identified
2010 – April	Taskforce reports to Government Hon Tariana Turia appointed Minister Responsible for Whanau Ora Governance Group established First Whanau Ora providers selected
2010 – June 2014	Primary focus on building provider capacity to work in a whanau-centred way to empower whanau; Iwi chairs consider Iwi/Crown relationship
2014 – July	Whanau ora moves to a commissioning model Iwi/Crown agree Terms of Reference for Whanau Ora Partnership Group
2015 – August	Whanau Ora Partnership Group agrees Whanau Ora Outcomes Framework
2016 – March	Whanau Ora Partnership Group monitoring outcomes against the Framework
2016 – April/May	Iwi host regional hui and report back to WOPG
2017	Whānau Ora Partnership Group advance work on Monitoring, Co-investment & Data Analytics




Whānau Ora Outcomes Framework

- Shared vision for whānau ora
- Long, medium and short term outcomes
- Includes six high level outcomes from the Whānau Ora Taskforce work, plus a seventh from He Korowai Oranga
- Whānau goals and aspirations



Iwi/community consultation, April-June 2016

- 20 hui nationally, 13 in the North Island, 6 in the South Island, one by phone to the Chathams
- Hui were two hours in length, open to anyone, but usually hosted by an Iwi organisation or Iwi-based health provider
- WOPAG Iwi Chairs attended in their respective rohe



Iwi/community consultation, April- June 2016

- Which goals are a priority for your whānau now?
 - Where are you investing most of your resources now?
 - Where are you seeing progress?
 - What are the emerging priorities for your iwi?
- self-managing and empowered leaders
 - living healthy lifestyles
 - participating fully in society
 - confidently participating in Te Ao Māori
 - economically secure and successfully involved in wealth creation
 - cohesive, resilient and nurturing
 - responsible stewards of their living and natural environments



Results

- The Whānau Ora Outcomes Framework is on the “right track”
- The Whānau Ora Partnership Group is an important voice for Iwi to drive issues at a strategic level that whānau face on the ground
- Under-resourcing is a major risk to WO. Current levels of investment are insufficient to “transform” the lives of whānau



Results

- Government agencies continue to work in isolation - greater transparency by the WOPAG is sought
- More work needs to be done to build understanding and capacity to operationalise the Treaty relationship at regional and local levels
- The Whānau Ora Commissioning Model is not working for some iwi



Thank you
